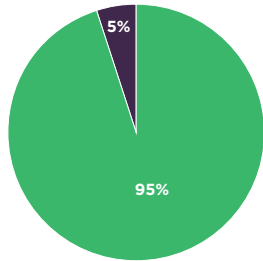


ImpactAssets Impact Portfolios

100% Impact Portfolios provide diversified access to world-class fund managers addressing social and environmental issues across asset classes. These portfolios have been designed for different investment and grantmaking time horizons, risk appetites and liquidity profiles.



Liquid Impact Portfolio

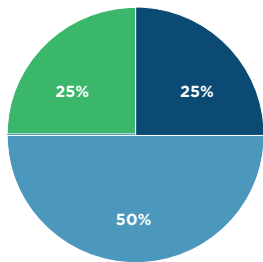
95% CASH/CASH EQUIVALENTS

60% Certificates of Deposit
35% Money Market Fund

5% PRIVATE DEBT

5% ImpactAssets Community Investment Strategy

Investment Horizon: 0-12 Months | Seeks to preserve capital through a portfolio of cash equivalents and short-term fixed income. This Portfolio is tilted towards social impact with a domestic orientation.



Conservative/Short-term Portfolio

50% PUBLIC DEBT

50% Calvert Bond Fund

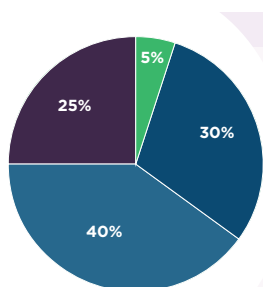
25% CASH/CASH EQUIVALENTS

25% Calvert Short Duration Income Fund

25% PRIVATE DEBT

25% ImpactAssets Community Investment Strategy

Investment Horizon: 1-3 Years | Seeks to preserve capital and generate growth through a portfolio of mostly U.S. short-term bonds and higher yielding private debt. This portfolio is tilted towards global social impact.



Moderate/Mid-term Portfolio

5% CASH/CASH EQUIVALENTS

5% Calvert Short Duration Income Fund

30% PUBLIC DEBT

15% Access Capital Community Investment Fund
15% Calvert Bond Fund

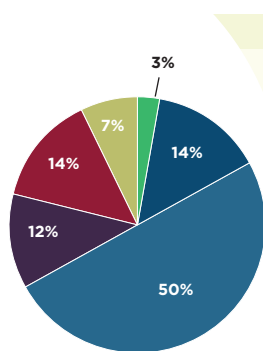
40% PUBLIC EQUITY

21% Calvert U.S. Large Cap Core Responsible Index Fund
14% PAX MSCI International ESG Index Fund
5% Calvert Small Cap Fund

25% PRIVATE DEBT

20% ImpactAssets Community Investment Strategy
3% ImpactAssets Global Sustainable Agriculture Pool
2% ImpactAssets Microfinance Plus Pool

Investment Horizon: 3-5 Years | Seeks moderate growth and risk through a balanced portfolio of global stocks, bonds and private debt. This Portfolio is tilted towards global social impact.



Aggressive/Long-term Portfolio

3% CASH/CASH EQUIVALENTS

3% Calvert Short Duration Income Fund

14% PUBLIC DEBT

7% Calvert Bond Fund
7% Access Capital Community Investment Fund
18% DFA International Sustainability Core 1 Fund

50% PUBLIC EQUITY

16% DFA U.S. Sustainability Core 1 Fund
13% Calvert U.S. Large Cap Core Responsible Index Fund
3% Calvert Small Cap Fund
6% ImpactAssets Community Investment Strategy

12% PRIVATE DEBT

3% ImpactAssets Global Sustainable Agriculture Pool
3% ImpactAssets Microfinance Plus Pool

14% PRIVATE EQUITY

14% ImpactAssets Private Equity

7% REAL ESTATE

7% Versus Capital Multi-Manager Real Estate Income Fund

Investment Horizon: 5-7 Years | Seeks long-term growth and risk through a diversified investment portfolio of global stocks, bonds and private debt and equity. This portfolio is tilted towards global environmental impact.

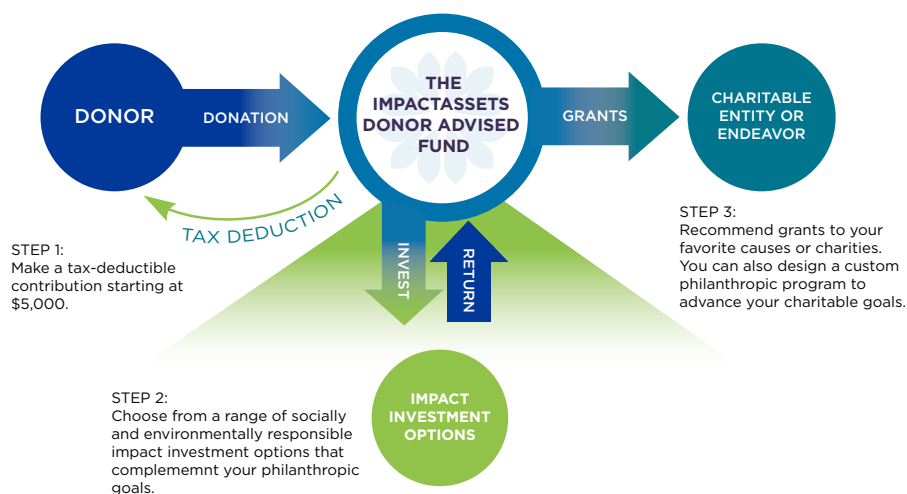
ImpactAssets 100% Impact Investing Platform

INVESTMENT OPTIONS AVAILABLE THROUGH THE IMPACTASSETS DONOR ADVISED FUND

Through The ImpactAssets Donor Advised Fund, donors uniquely access a wide range of impact investment options across themes, geographies and asset classes. All the investment options offered by The ImpactAssets Donor Advised Fund are chosen for the opportunity to provide positive social and environmental returns, as well as the potential for financial returns to preserve and grow your philanthropic capital.

IMPACT INVESTMENT OPTIONS		
Additional fees may apply. Fees vary by investment.		
	INVESTMENT HORIZON	
PUBLIC DEBT & EQUITY	3-5 Years	SOCIALLY & ENVIRONMENTALLY SCREENED MUTUAL FUNDS & EXCHANGE TRADED FUNDS (ETFs) Mutual Funds & ETFs that invest in public companies that consider environmental, social and governance (ESG) criteria in their decision making. Investment options cover a range of asset classes and social and environmental themes.
PRIVATE DEBT & EQUITY	5-7 Years	PRIVATE DEBT & EQUITY DIRECT IMPACT FUNDS A rotating selection of professionally managed funds that seek to generate significant social and environmental impact. ImpactAssets Donor Advised Fund clients are able to access these funds at lower minimums.
	5-7 Years	CUSTOM INVESTMENTS Client-sourced direct investments in private mission-driven businesses, impact funds and nonprofit organizations that are committed to measuring and reporting on their financial returns as well as social and environmental impact.
IMPACTASSETS IMPACT PORTFOLIOS	0-12 Months	LIQUID IMPACT PORTFOLIO Cash equivalents and short-term fixed income.
	1-3 Years	CONSERVATIVE IMPACT PORTFOLIO U.S. short-term bonds and higher yielding private debt.
	3-5 Years	MODERATE IMPACT PORTFOLIO Balanced portfolio of global stocks, bonds and private debt.
	5-7 Years	AGGRESSIVE IMPACT PORTFOLIO Diversified investment portfolio of global stocks, bonds and private debt and equity.
COMMUNITY INVESTMENT OPTIONS	1-3 Years	IMPACTASSETS COMMUNITY INVESTMENT STRATEGY A professionally managed portfolio that invests in fund managers addressing issues related to community development including affordable housing, financial inclusion, small business funding, sustainable agriculture and fair trade.
	0-12 Months	CALVERT IMPACT CAPITAL WOMEN INVESTING IN WOMEN INITIATIVE "WIN-WIN" WIN-WIN targets investments in organizations that develop and market clean technologies and energy solutions to women in the developing world, sectors that can create outsized impact on women's health.

How The ImpactAssets Donor Advised Fund Works



ABOUT THE IMPACTASSETS DONOR ADVISED FUND

The ImpactAssets Donor Advised Fund is an innovative donor advised fund that empowers donors to increase the impact of their giving by combining it with strategic sustainable and responsible investing to build a sophisticated philanthropic endowment.

Donors recommend how their ImpactAssets Donor Advised Fund account assets are invested across a range of leading impact investment options including community investment, turn-key portfolios, private debt and equity funds and custom investments. The ImpactAssets Donor Advised Fund currently has more than \$1B in assets in 1,200 donor advised funds, working with 350 wealth advisors across 60 financial services firms.

ABOUT IMPACTASSETS

ImpactAssets is a nonprofit financial services firm that increases the flow of capital into investments that deliver financial, social and environmental returns.

Our donor advised fund and knowledge tools provide dynamic resources for wealth managers and the clients they serve to advance social or environmental change through investment.